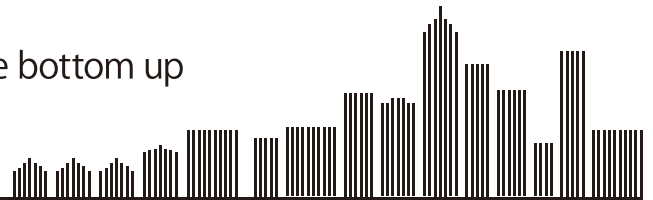


Professional of No-dig Technology

With pride to protect the lifeline of living
Technology to support social activities from the bottom up
Security and future of lifelines created
by the no-dig technology



We perform pipeline reclamation using the no-dig technology in desired places of social infrastructure (sewerage, electric power / communication, water service) and private sector (industrial water, disaster prevention / disaster measures).

Problem of open excavation work by digging up the road.

【Surrounding Environment】

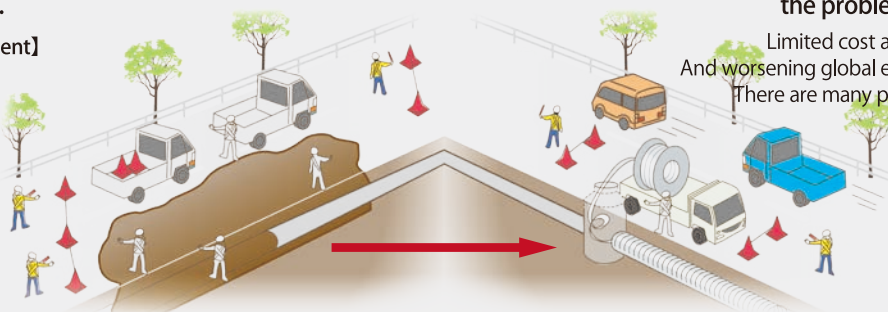
Noise and Traffic blockage

【Global Environment】

Noise and Traffic blockage

【Construction Efficiency】

Noise and Traffic blockage



The no-dig construction solved the problem in one fell swoop.

Limited cost and construction period.
And worsening global environmental problems.
There are many problems associated with open excavation work.

That is why what is needed now is no-dig construction.

Sewerage
(small diameter)



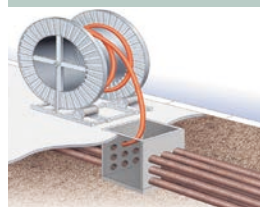
Sewerage
(medium / large diameter)



Sewerage
(large diameter)



Electric power
Communication



Disaster Prevention

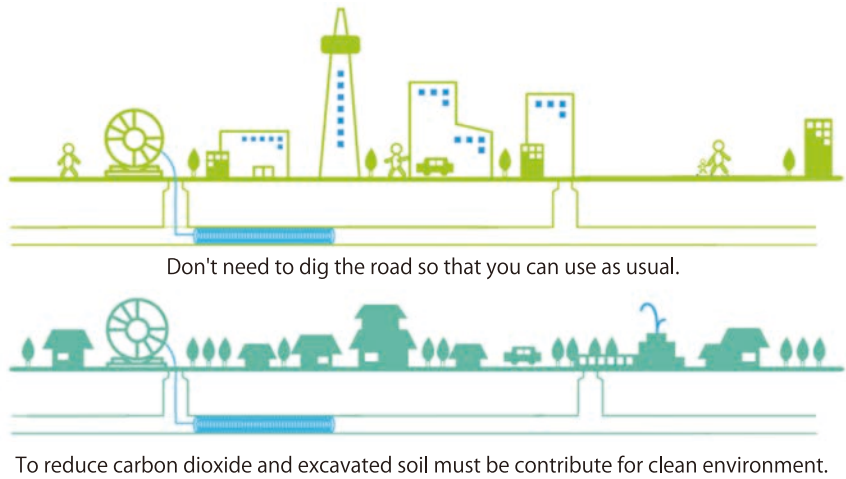


For Environment

【Basic Philosophy】

In order to leave the beautiful Earth for the children of the future and with the concept of Cherish Limited Resources, we recognize that business activities as construction industry are closely related to all countries and regions, and promote activities aimed at a sustainable recycling society in harmony with the environment.

Advantage of No-Dig construction



Product for Disaster Prevention & Disaster Measures

Disaster prevention
storage typetemporary
toilet system



Backfilled
pavement



Installed when a disaster occurs



This is a temporary toilet system when a disaster occurs. By connecting it directly to the public sewerage, the toilet maintenance cost can be reduced.

Company Profile

Company name	Nippon No-Dig Technology LTD.	President	Naoki Yamada
Founded	April 8, 1994		
Capital	60 million yen		
Head office	East Square Omori 5th Floor 6-20-14 Minami-oi Shinagawa-ku Tokyo 140-0013 Japan TEL +81-3-5764-2300 FAX +81-3-5764-2301	Tokyo Branch	East Square Omori 5th Floor 6-20-14 Minamioi Shinagawa-ku Tokyo 140-0013 Japan TEL +81-3-5764-2300 FAX +81-3-5764-2301
Construction Business License	Ministry of Land, Infrastructure and Transport permission (Special-5), No. 17777	Tohoku Branch	Sumitomoseimei Sendaichuo Bldg. 10th Floor 4-6-1 Chuo Aoba-ku Sendai City Miyagi 980-6010 Japan Tel +81-22-722-3744 Fax +81-22-722-3745
Description of Business	■ Civil Engineering SPR method, Omega Liner method ■ Pipeline construction Communication pipeline reclamation method, electric power pipeline reclamation method Manhole Toilet for Disaster (Storage Type) Disaster Prevention Storage Toilet System	Business locations	Yokohama Branch
			Yokohama Businesspark WestTower 7th Floor 134 Godocho Hodogaya-ku Yokohama City Kanagawa 240-0005 Japan Tel +81-45-348-4811 Fax +81-45-348-4848
			Nishinohon Branch
			Hirose Hiranomachi Bldg. 1st Floor 2-6-6 Hiranomachi Chuo-ku Osaka City Osaka 541-0046 Japan Tel +81-6-4706-2007 Fax +81-6-4706-2008