

HIROSE ASIAN NETWORK



Specialized construction company contributing to infrastructure development and construction in Southeast Asia

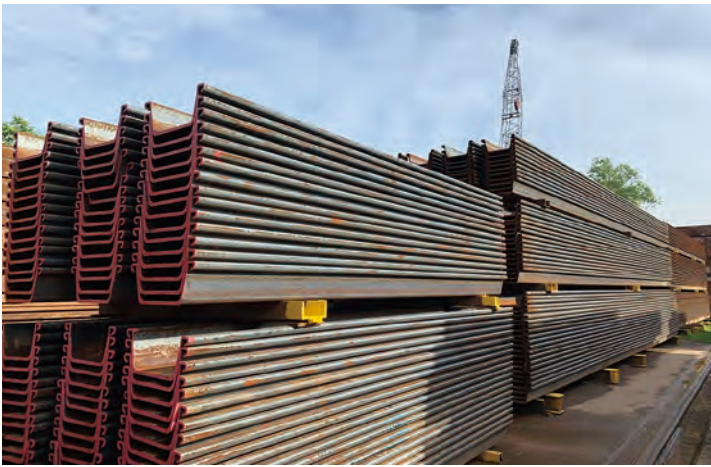
As a trusted partner.

The Hirose Group serves as a specialized corporate group of heavy temporary construction businesses that support infrastructure development in Singapore, Thailand, Vietnam, in Southeast and Asia.



OUR REGIONAL NETWORK





Sheet Pile



Road Deck Panels



H-Beam



Earth-Retaining Material

Company Profile

HIROSE (SINGAPORE) PTE. LTD.

Company name	HIROSE(SINGAPORE)PTE. LTD.	Founded	April 1983
Head office	200 Cantonment Road, #06-06/07, Southpoint, Singapore 089763	Capital	10 million Singapore Dollars
Contact	TEL +65-6225-8655 Email inquiry@hirose.sg	President	Hisataka Miura
		Description of Business	Rental and sales of heavy temporary materials and contract of construction work
		home page	http://www.hirose-singapore.com/

HIROSE (THAILAND) LTD.

Company name	HIROSE(THAILAND)LTD
Head office	21st Floor, Wave Place Bldg., 55 Wireless Road, Lumpini, Pathumwan Bangkok 10330, Thailand
Contact	TEL +66-2-651-5505 Email sales@hirose.co.th
Founded	September 1988
Capital	10 million Bahts
President	Akihiro Katsumata
Description of Business	Rental and sales of heavy temporary materials and contract of construction work
home page	http://www.hirose.co.th/

HIROSE VIETNAM CO.,LTD. HIROSE (VIETNAM) HANOI CO.,LTD.

Company name	HIROSE VIETNAM CO., LTD. HIROSE (VIETNAM) HANOI CO., LTD.
Head office	7th Floor, Phuong Long 2 Building, 16 Nguyen Truong To Street, Ward 12, District 4, Ho Chi Minh City, Vietnam 9th Floor, Vinafor Building, 127 Lo Duc Street, Dong Mac Ward, Hai Ba Trung District, Hanoi, Vietnam
Contact	TEL +84-28-3824-7710 Email admin@hirose.vn (Ho Chi Minh) TEL +84-24-3220-2005 Email infor.hirose@hirose.vn (Hanoi)
Founded	January 2011
Capital	8.27 million US dollars
President	Masazumi Matsuura
Description of Business	Rental and sales of heavy temporary materials and contract of construction work
home page	http://www.hirose.vn/