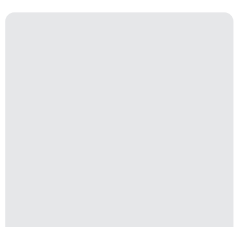
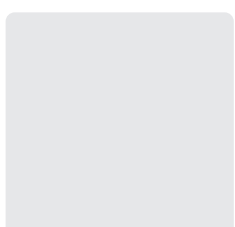
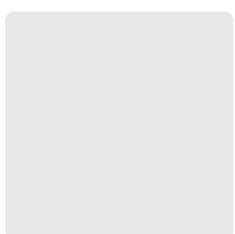
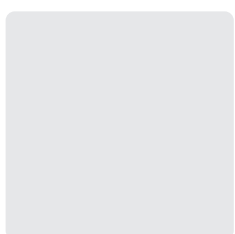


会社案内
Company Profile



Hirose Group philosophy

We continue to support a prosperous society through high-quality, reliable technology and on-site capabilities developed over decades.



HIROSE GROUP

HIROSE HOLDINGS & CO.,LTD.

HIROSE & CO.,LTD.

Pioneer of heavy temporary material leasing,
No. 1 result of temporary bridges

HIROSE HOKYODO & CO.,LTD.

Pioneer in the field of reinforced earth sharing more
than 40 years of technology and experience

Caddec Co., Ltd.

Caddec reliably designs temporary
materials and embankments.

SeikoTone Co., Ltd.

Specialist of underground construction /
foundation construction

INDUSTRIAL LEASING CORPORATION

Integrated engineering company of tower cranes

Nippon No-Dig Technology LTD.

Protecting lifelines. No-dig construction

Technical Brain

IT for the Prosperous Future

北陸建材株式会社

Leasing and sales of temporary construction materials
essential for civil engineering and construction work

株式会社ファクト

A group of demolition specialists that responds
to a variety of needs

Overseas bases

Specialized construction company
contributing to infrastructure development /
construction in Southeast Asia

 HIROSE (SINGAPORE) PTE. LTD.

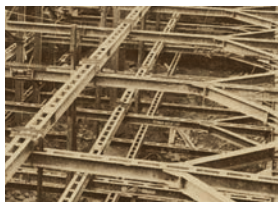
 HIROSE VIETNAM CO.,LTD.

 HIROSE (THAILAND) LTD.

 HIROSE (VIETNAM) HANOI CO.,LTD.

Since 1938

Established Hirose Seizaburo Shoten Co., Ltd.,
and started the sheet-pile leasing business.



1959 Hirose's original brand,
Nikkenstar steel earth-retaining
material was developed.

「Hirose Technology」

Inspired by the steel beams that offer superior function and safety compared to wooden beams, Nikkenstar type steel earth-retaining material was born. The success of the steel earth-retaining material triggered establishment of a solid position as Hirose Technology. In 1971, Nikkenstar type NT panel was born. The panels were used extensively in large road construction projects and disaster recovery work.



office at the time of establishment

We rented a room as a store at the south side of the third floor of Sumitomo Bank's Itachibori Branch, and Hirose Seizaburo Shoten Co., Ltd., was born.

This was a quake-resistant, fire-resistant building and considered quite modern for its time. The first product handled was not steel and steel products, but 200 tons of sheet piles. Sheet piles used for foundation construction were a product which took time and efforts, such as removing mud and correcting distortion after being used once. Hirose Seizaburo, founder of Hirose, grasped the situation that the civil engineering contractors were in trouble, and started its business from the rental business of sheet piles by "lending" them instead of by "selling" them.



1974 Technical cooperation with
Terre Alme in France

More than 40 years of history

In Japan, where natural disasters can occur, Hirose's materials withstand such stresses, including the Great East Japan Earthquake, and have proven to be very safe.



1976 Technical cooperation with Krupp in Germany
Completion of the NikkenstarKD Bridge

7,000 bridges

Hirose's KD bridges and pre-girder bridges, which are used for rebuilding aging bridges and for emergency rebuilding in a disaster, have been used in more than 7,000 bridges in Japan.

And,
Accumulating evolutions,
toward the 100th anniversary.

Since the establishment in 1938 as Hirose Seizaburo Shoten Co., Ltd., which leased heavy temporary materials, the company has led the industry while expanding business into temporary bridges and reinforced earth. In 2017, each business was divided into separate companies, and a system in which HIROSE HOLDINGS&CO.,LTD., formulates and executes the strategy and manages the business in an integrated and agile manner was established. And now, the quality of trust that has been cultivated for over 80 years has been expanded to domestic and overseas enterprises, and the company has developed into a collective corporate entity that supports the social infrastructure of the world. The Hirose Group, which supports the richness of today and contributes to the creation of a better future, will continue to evolve in the future.

Company Profile

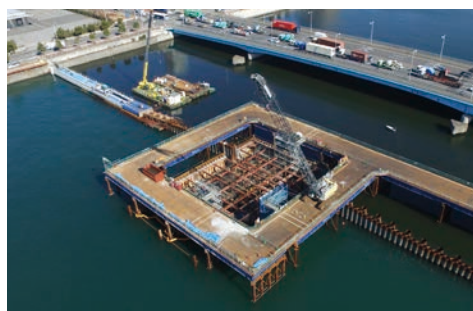
Company name	HIROSE HOLDINGS&CO.,LTD.	Representative Director, Chairman and President	Taichi Hirose
Founded	November 25, 1938		
Capital	2,341,854,009yen		
Sales	136,440 million yen (Hirose Group for fiscal year ended March 2024)		
Number of employees	1,894 people (Hirose Group / As of March 31, 2024)	Banks of account	MUFG Bank,Ltd., Mizuho Bank,Ltd. Sumitomo Mitsui Banking Corporation. Resona Bank., Limited, Sumitomo Mitsui Trust Bank, Limited., The Norinchukin Bank. The Chiba Bank, Ltd.
Head office	Toyo Central Bldg. 4-1-13 Toyo Koto-ku Tokyo 135-0016 Japan TEL +81-3-5634-4501 2-3-87 Nakashima Nishiyodogawa-ku Osaka city Osaka 555-0041 Japan (Address of the registration)		
Description of Business	Developing group-wide management strategies and overseeing their implementation		

Discover the Pioneers of heavy temporary steel materials and temporary bridgework construction.

For proposals, planning, and execution related to temporary civil and architectural works, leave it to Hirose.

It is a circular business model in which materials are used repeatedly.

Temporary jetty for construction【G-pilled jetties】



Temporary bridge for detour route【Pre-girder bridges】



Earth-retaining construction【Hirose twin beam】



Earth-retaining construction【Hirose twin beam】



Hirose's temporary bridges contribute to disaster recovery and reconstruction.

After a disaster



Completed



The temporary bridges by Hirose exert great power during disaster recovery and reconstruction. In the event of a disaster, a bridge will be washed away or fall down, and the infrastructure will shut down. In order to achieve immediate access by emergency vehicles and solve traffic blocking for local residents, we install a temporary bridge through quick construction.

Creating Time and Value
through the Power of Digital.

HIROSE DX



Easy to order, our e-commerce site allows you to quickly procure any amount of materials needed on-site, Minnano Kotaro.



E-commerce

Sales are limited to Hokkaido, Tohoku, and Chugoku regions.



The Hirose app is your solution to on-site questions and concerns about heavy temporary steel materials.

Hirose Application

Hirose original calculator/Catalog download/
Earth-retaining material's standard table/
Unit weight table/Cross-sectional performance diagram



Company Profile

Company name	HIROSE&CO.,LTD.	President	Nobuhiko Shimomoto
Founded	April 10, 2017	ISO(Quality)	Osaka Temporary Bridge Plant has acquired Quality Management System certification ISO9001.
Capital	100 million yen		
Head office	Toyo Central Bldg. 4-1-13 Toyo Koto-ku Tokyo 135-0016 Japan Tel +81-3-5634-4538 2-3-87 Nakashima Nishiyodogawa-ku Osaka City Osaka 555-0041 Japan (Address of the registration)	Major customers	Ministry of Land Infrastructure and Transport, Regional Development Bureaus of the Ministry of Land, Japan Railway Construction, Transport and Technology, Obayashi Corporation, Taisei Corporation, Takenaka Corporation, Shimizu Corporation, Kajima Corporation, East Japan Expressway, Central Japan Expressway, West Japan Expressway, Japan Railways
Construction Business License	Ministry of Land, Infrastructure and Transport permission (Special-4), No. 26718 Ministry of Land, Infrastructure and Transport permission (General-4), No. 26718	Major suppliers	Nippon Steel, MM&KENZAI Corporation, OKAYA&Co.,Ltd., Nippon Steel Trading Corporation, Hanwa Co., Ltd., ITOTYU Corporation, Marubeni Corporation, Marubeni Itochu Sumisho Techno Steel
Description of Business	<ul style="list-style-type: none"> Leasing, sales, processing of temporary steel materials Planning, design, proposal construction of temporary structures Proposal, construction methods Leasing, sales of temporary bridges 	Bank of Account	MUFG Bank, Ltd., Mizuho Bank, Ltd., Sumitomo Mitsui Banking Corporation, Resona Bank, Limited., Sumitomo Mitsui Trust Bank,Limited., The Norinchukin Bank., The Chiba Bank, Ltd.
Product / Construction Method	<p>【Heavy temporary construction Business】 Sheet piles, H-Beam,Steel pipe sheet piles, Steel pipe piles, Earth-retaining materials, High-strength earth retaining main materials, Road decks, Steel plates, Guard One(Crash barrier), Pile saver, Pile guard, Cross Wave Hirose Mega Beam, Hirose Twin Beam, Hirose Smart Earth-retaining material, Cross-section changing pile, Horizontal cutting beam method, Concentrated cutting beam method, Single anchor waling, No anchor bracket method, Rakunuki method, Preloading construction, Silent piler method, Water jet combined press-in method, Hard soil clear method, Avolon method, Two-groove multi-pulley pull-out method, Vibratory pile driver method, Water jet combined vibratory pile driver method, HAS method, Down-the-hole method, Noval Hammer method, Rock Auger method, SMW method, ECO-MW method, Full-slewing all casing method (CD method), BG method (multifunctional large diameter boring method), L-shaped guards method</p> <p>【Temporary bridges】 Pre-girder bridges, KD bridges, HS trusses, G-pilled jetties, Hirose slide lock, SOKKETSU KANBEE, Hirose Mega Clamp,Top-KAN Hirose temporary jetty for construction, Hi-BRIDGE method, Hi-RoRo method, HiDoless method, KANTORII method, Parallel-mixed method</p>		

There is a reason for the quality



EP Root Pile

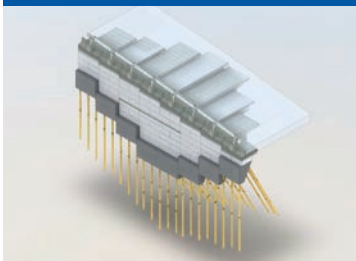


Terre Armée

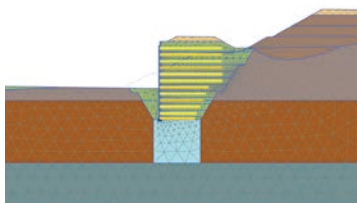
Efforts for Safety and Security

50 years experience of Terre Armée method in Japan, We are confident for earthquake resistance proven by many earthquake resistances. Method of EP Root Pile is adopted in a wide range of fields such as roads, steep slope walls, prevent erosions, creations that contribute a disaster-resistant urban development. We will continue to make the best proposals to provide a safe and secure life.

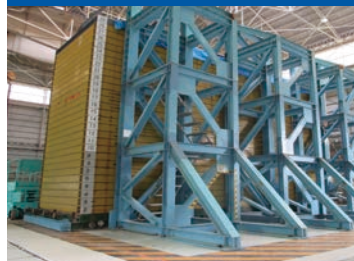
Application of 3D models to CIM



Prediction of structural deformation (FEM Analysis)



Seismic test



Working on i-Construction



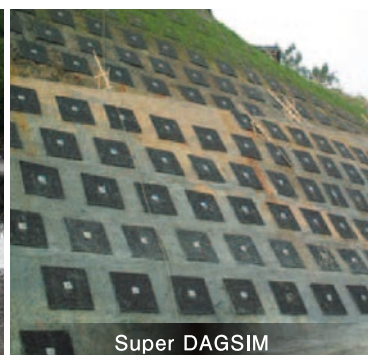
For best proposal, we examine from all angles



Methods



EP Root Pile



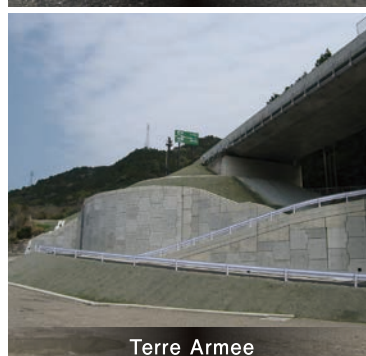
Super DAGSIM



High-Resistance Micro Pile



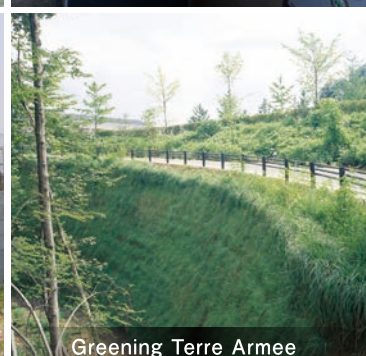
TECH SPAN



Terre Armee



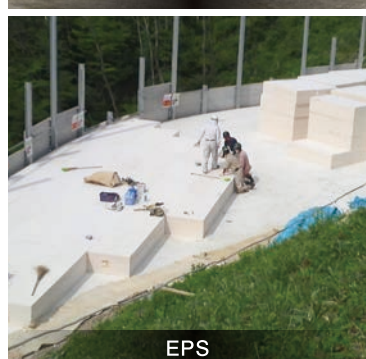
Housing Land Development Terre Armee



Greening Terre Armee



Terra Trail



EPS



M1 Wall



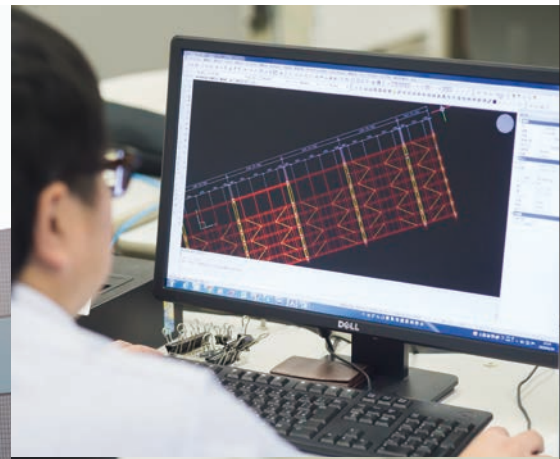
NSS Block



Cage Frame

Company Profile

Company name	HIROSE HOKYODO&CO.,LTD.		President	Yoshitaka Uebaba
Founded	April 10, 2017			
Capital	100 million yen			
Construction Business License	Ministry of Land, Infrastructure and Transport permission (Special-4), No. 26727			
Description of Business	<ul style="list-style-type: none">Contract for civil engineering work (earth reinforcing work)Design and sales of reinforced earth methodsSales of construction-related products			
Business locations	Head Office	Toyo Plaza Bldg. 4th floor 3-23-22Toyo Koto-ku Tokyo 135-0016 Japan Tel +81-3-5634-4508	Kansai-Shikoku Sales Department	Hirose Hiranomachi Bldg. 2-6-6 Hiranomachi Chuo-ku Osaka City Osaka 541-0046 Japan Tel +81-6-6203-8500 (Kansai Sales Department)
	Kita Nihon Sales Department Kita Nihon ConstructionDepartment	Imasu Futsukamachi Bldg. 2nd Floor 10-20 Futukamachi Aoba-ku Sendai City Miyagi 980-0802 Japan TEL +81-22-265-6203	Nishi Nihon Development Sales Department Construction Headquarters Nishi Nihon Construction Department	Tel +81-6-6203-8602 (Nishi Nihon Development Sales Department) Tel +81-6-6203-8600 (GeoTechnical Construction Headquarters)
	Kanto Sales Department Higashi Nihon Development Sales Department Higashi Nihon Construction Department	Toyo Plaza Bldg. 4th floor 3-23-22Toyo Koto-ku Tokyo 135-0016 Japan Tel +81-3-5634-4519	Chugoku Sales Department	Teriha Hiroshima 2nd Floor 1-8 Nishi-koujintyo Minami-ku Hiroshima City Hiroshima 732-0806 Japan Tel +81-82-261-1140
	Chubu-Hokuriku Sales Department Naka Nihon Construction Department	Tokai Bldg. 8th Floor 1-16-30 Meiekininami Nakamura-ku Nagoya City Aichi 450-0003 Japan Tel +81-52-588-8510	Kyushu-Okinawa Sales Department Minami Nihon Construction Department	Hakata Kuramoto Ota Bldg. 7th Floor 2-1 Narayamachi Hakata-ku Hukuoka City Hukuoka 812-0023 Japan Tel +81-92-283-7325



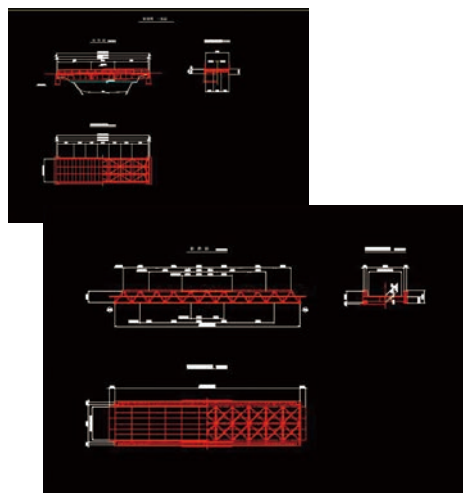
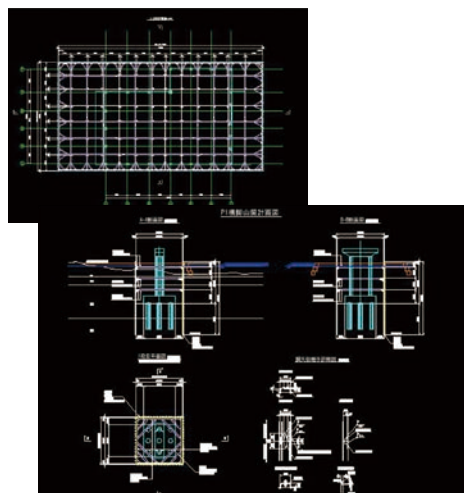
Professionals in temporary structure design and earthwork structure design respond from planning to calculation, drawing, and integration.

We have more than 200 trading results in Japan and overseas, including China and Vietnam.

Temporary Structure Design

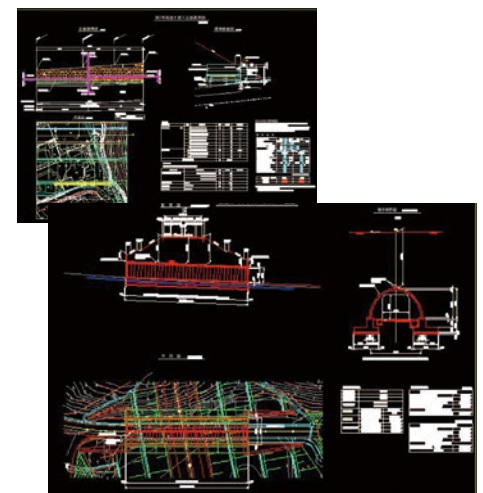
We design earth retaining support construction, temporary shutoff construction using steel earth retaining materials, and high-strength earth retaining main materials (Hirose Mega Beam / Hirose Twin Beam). By partnering with overseas design companies, it is also possible to immediately respond to disaster recovery construction work etc.

We design temporary piers and gantries using bridge products, such as pre-girder bridges, KD bridges (truss bridges), and G piled jetty, including H-section steel girders. Through the operation of the bridge automatic drafting / calculation system, we are working to further improve quality and productivity.



Earthwork Structure Design

We design reinforced earth walls (Terre Armee), arch culverts (TechSpan), and large blocks (NSS block) using precast concrete products. Reinforcing earth walls are also compared with the major construction methods.



As a design professional group engaged in temporary structures and earthwork structures, which are essential to social infrastructure development, we aim to be a company that continues to be relied on by customers who plan for them.

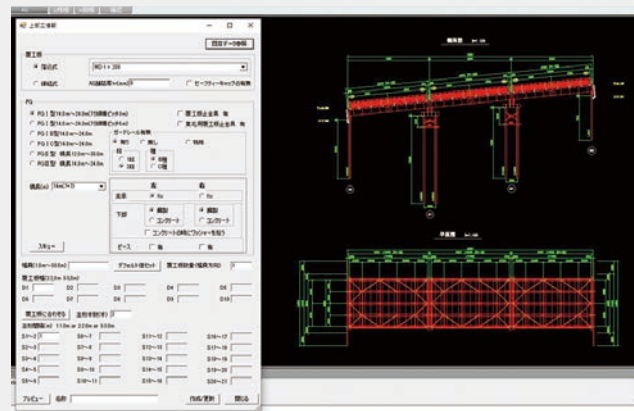
3D-CAD

With the promotion of BIM/CIM by the MLIT, we are introducing and utilizing 3D-CAD. In addition, 3D-CAD is also utilized as a training material for in-house education, such as reproducing the earth retaining material assembly drawing described in the Nikkenstar Steel Earth Retaining Material General Catalog in 3D.



Development of Bridge Automatic Drafting / Calculation System

In order to respond to the diversification and complexity of bridge products in recent years, we have developed a bridge automatic drafting / calculation system. With the development and operation start of the system, it has become possible to simplify structure selection (standardization by programs) and to improve efficiency by automatic drafting (achievement of quick delivery).

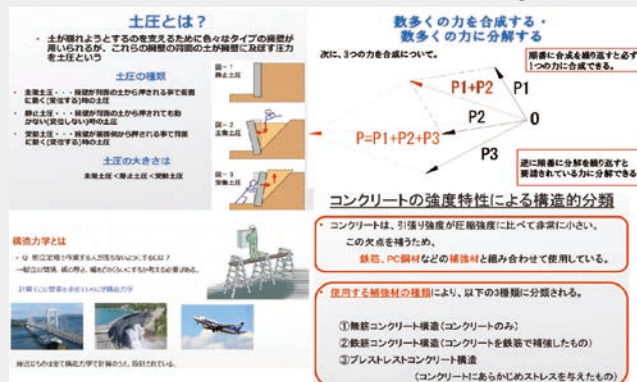


Efforts for Quality Improvement

We hold in-house workshops to present information and experiences useful for operations. In addition, various efforts are performed for quality improvement, such as the maintenance and restructuring of training manuals for in-house education, and technical guidance for overseas partner companies.



Training Handbook



※Inside of handbook ex What is Soil pressure?

Cleaning Activity Around Company

For the purpose of improving the local environment, we are working on the cleaning activity around our company once a week. Aiming for a company that can contribute to society through activities, we are searching for new efforts on a daily basis.



Company Profile

Company name	Caddec Co., Ltd.	President	Jun Nagatomo
Founded	April 11, 1989		
Capital	90 million yen		
Number of employees	64 people	Description of Business	<ul style="list-style-type: none"> Design and drafting of temporary structures Design and drafting of earthwork structures Consulting concerning civil engineering work
Head office	2-1-2 Gakuen Kibanadai-Nishi Miyazaki City Miyazaki 889-2155 Japan TEL +81-985-58-1211 FAX +81-985-58-2131		

Specialist for Underground Construction and Foundation Construction



SeikoTone supports the bedrock of society.

SeikoTone is a specialized company that plans and constructs underground structures and foundations using its original construction methods. This leading underground construction company offers reliable technical strength cultivated over many years.

Earth retaining / Cut-off wall



SMW



TRD



RC continuous wall

Foundation Pile



TBH



NS ECO-PILE

Steel pipe sheet pile
Press-in steel pipe pile



Drilling press

For Safety and Security, Opening of Skill Training Center

In October 2018, with the aim to transfer the technologies to younger employees, the Skill Training Center was established where trainees use actual machines to train in the basic structures and safety of piling machines and steel pipe press-in machine. It is possible to provide training on operation technology improvement of heavy equipment operators for developing a coping strategy in case of problems.



Company Profile

Company name	SeikoTone Co., Ltd.	President	Toshiro Misumi
Founded December	December 16, 2008		
Capital	100 million yen		
Number of employees	223 people		
Head office	Nihonbashi Horidomecho First. 3rd Floor 1-2-10 Nihonbashi horidomecho Chuo-Ku Tokyo 103-0012 Japan TEL +81-3-5645-3232 FAX +81-3-5645-3233	Major Customer	OBAYASHI CORPORATION, OKUMURA CORPORATION, KAJIMA CORPORATION, KUMAGAI GUMI, CO., LTD., KONOIKE CONSTRUCTION CO., LTD., Penta-Ocean Construction Co., Ltd., SATO KOGYO CO., LTD., SHIMIZU CORPORATION, TAISEI CORPORATION, DAITETSU KOGYO CO., LTD., TAKENAKA CIVIL ENGINEERING & CONSTRUCTION CO., LTD., TEKKEN CORPORATION, TOA CORPORATION, TODA CORPORATION, TOBISHIMA CORPORATION, NISHIMATSU CONSTRUCTION CO., LTD., Fujita Corporation, MAEDA CORPORATION, SUMITOMO MITSUI CONSTRUCTION CO., LTD. Asunaro Aoki Construction Co.,Ltd., DAIHO CORPORATION, WAKACHIKU CONSTRUCTION CO., LTD., Morimoto Corporation, HAZAMA ANDO CORPORATION
Construction Business License	Ministry of Land, Infrastructure and Transport permission (Special-5), No. 23020 Civil engineering work business, construction work business, scaffolding / earthwork business, and rebar work business, well boring work business, water utility work business, and steel structure work business		
Description of Business	Earth retaining / Cut-off wall Foundation pile Steel pipe sheet pile / Steel pipe pile press-in Ground improvement Environmental measures	Participating Organization	SMW Association, Continuous-wall using Recycled Mud, NIJ Study Group, CCC Method Association, Underground Wall Construction Association, TRD Method Association, RAS Column Study Group, Japan Press-in Tubular Pipe Association, ECO-MW Association, Cement Deep Mixing Method Association, NS ECO-PILE Method Association, Japan Association for Pulling-out Existing Piles
		Bank of Account	MUFJ Bank, Ltd., Mizuho Bank, Ltd., Resona Bank, Ltd., Sumitomo Mitsui Banking Corporation, Kiraboshi Bank, Ltd.
Product / Construction	Earth retaining / Cut-off wall ・ MW method, ECO-MW method, Neo-e method, TRD method, underground dam method, CCC method, RC continuous wall method, steel continuous wall method, CRM method, SATT method Cast-in-place concrete pile ・ BH method, TLS method, Neo-e method, all casing method, BH method, Deep foundation method Precast pile ・ NS ECO-PILE method, ST Micro Pile method Steel pipe sheet pile / ・ Drilling press method, rotary press method, stand-alone press-in (combination use of WJ) Press-in steel pipe pile Underground obstacle removal ・ Rosutoru_S method, all casing method, BG method, Rock Auger method, AH method, PG method Ground improvement ・ CDM method, RAS column method Environmental measures ・ Flexible Ecology Economy method, DIM method Boring management system ・ ADAM system, OS measurement system, APS measurement system		

Pioneer of Crane Rental

As a professional, we continue to pursue superior quality and technology, as we contribute to the realization of a rich society.

We handle tower cranes and jib cranes that are essential for tall buildings and large project constructions.



Planning Support

Selection of tower cranes and process planning from delivery to dismantling greatly influence the process, cost and safety of a construction project. We propose the best plan for our customers.



Design / Technical Support

Study of the installation position of a tower crane and design of the foundation part require advanced knowledge and a large amount of person-hours. The technical department of Industrial Leasing takes advantage of systems such as CAD to help our customers create planning drawings and formulate detailed process plan.



Maintenance

In order for the tower crane to operate safely and efficiently, it is essential to always maintain an optimal condition. In addition to our tower cranes, we also offer storage and management, maintenance, planning support service of the tower cranes owned by our customers.



Commissioned Construction Work Operation Business

You can outsource various operations related to tower cranes, such as assembly, climbing, dismantling work, and operation and inspection maintenance of tower cranes to Industrial Leasing.

For Environment, Introduction of Photovoltaic System

Our solar power generation systems are in operation at the Umemino Techno Center (east and west industrial area warehousing buildings). Based on the concept of shipping tower cranes from an eco-factor, we will unite our employees and work actively on environmental issues in the future as well.



Safety and Quality ISO9001:2015



Surveillance audit (headquarters)



Acquisition .. November 11, 1997
 Department .. INDUSTRIAL LEASING CORPORATION
 Location 3-4-3 Kanda Surugadai Chiyoda-ku Tokyo
 Certification .. International Standards Organization
 standard Quality Management System Certification
 IISO 9001:2015
 Conforming organization Osaka Branch, Kanan Techno Center, Umemino Techno Center
 Conforming range ... Rental, Temporary design, Procurement, Maintenance, Installation, Technical guidance, Operation maintenance management and periodic inspection of climbing cranes and jib cranes

Company Profile

Company name	INDUSTRIAL LEASING CORPORATION	President	Kazuhiro Yoshikawa
Founded	February 24, 1984		
Capital	99.9 million yen		
Head office	Ryumeikan Honten Bldg. 7th Floor 3-4-3 Kanda surugadai Chiyoda-ku Tokyo 101-0062 Japan TEL +81-3-5207-7061 FAX +81-3-5207-5015	Participating Organization	Tokyo Chamber of Commerce and Industry, Japan Construction Machinery and Construction Association, Japan Crane Association, Japan Construction Machinery Rental Association
Construction Business License	Ministry of Land, Infrastructure and Transport permission (General-3), No. 10920		
Crane manufacturing permission	<ul style="list-style-type: none"> Overhead crane with hoist: Saitama Labor Bureau permission, No. 1726 Bridge crane with hoist: Saitama Labor Bureau permission, No. 1729 Telpher: Saitama Labor Bureau permission, No. 1730 		
		Bank of Account	MUFG Bank, Ltd., Mizuho Bank, Ltd., Sumitomo Mitsui Banking Corporation, Shoko Chukin Bank
Products	Climbing cranes, Mast column cranes, Horizontal climbing cranes, Cranes for dam construction, Jib cranes, Cranes for dismantling, Elevators, Self-propelled cranes, Lifting scaffolds, Peripheral equipment for cranes,		
Description of Business	<ol style="list-style-type: none"> Leasing, rental and sales of tower cranes, jib cranes, elevators and peripheral equipment for cranes Installation planning and designing of tower cranes etc. Assembling, climbing, and dismantling work of tower cranes etc. Operation maintenance management of tower cranes etc. Maintenance, repair, and inspection services of tower cranes etc. Designing, manufacturing, and sales of parts and members of horizontal stays, temporary support beams, temporary gantries, etc. for tower cranes Design, manufacture, and sales of bridge cranes, overhead cranes and telfers Temporary planning and execution of construction work Leasing, rental and sales of maintenance equipment 		

Professional of No-dig Technology

With pride to protect the lifeline of living
Technology to support social activities from the bottom up
Security and future of lifelines created
by the no-dig technology



We perform pipeline reclamation using the no-dig technology in desired places of social infrastructure (sewerage, electric power / communication, water service) and private sector (industrial water, disaster prevention / disaster measures).

Problem of open excavation work by digging up the road.

【Surrounding Environment】

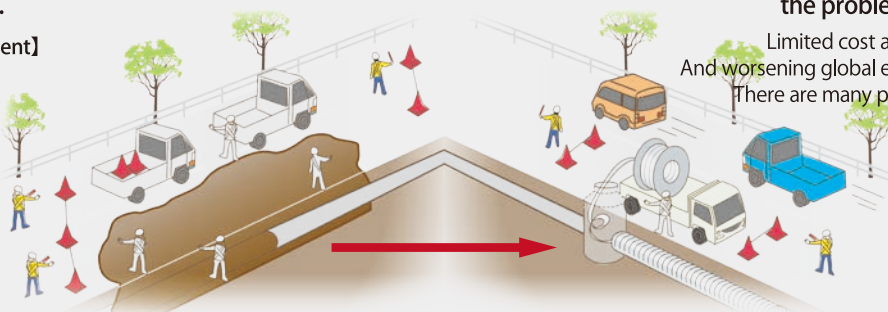
Noise and Traffic blockage

【Global Environment】

Noise and Traffic blockage

【Construction Efficiency】

Noise and Traffic blockage



The no-dig construction solved the problem in one fell swoop.

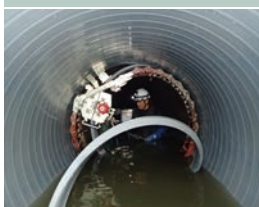
Limited cost and construction period.
And worsening global environmental problems.
There are many problems associated with open excavation work.

That is why what is needed now is no-dig construction.

Sewerage
(small diameter)



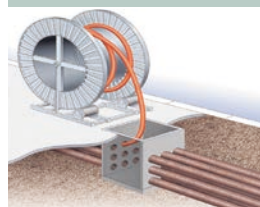
Sewerage
(medium / large diameter)



Sewerage
(large diameter)



Electric power
Communication



Disaster Prevention

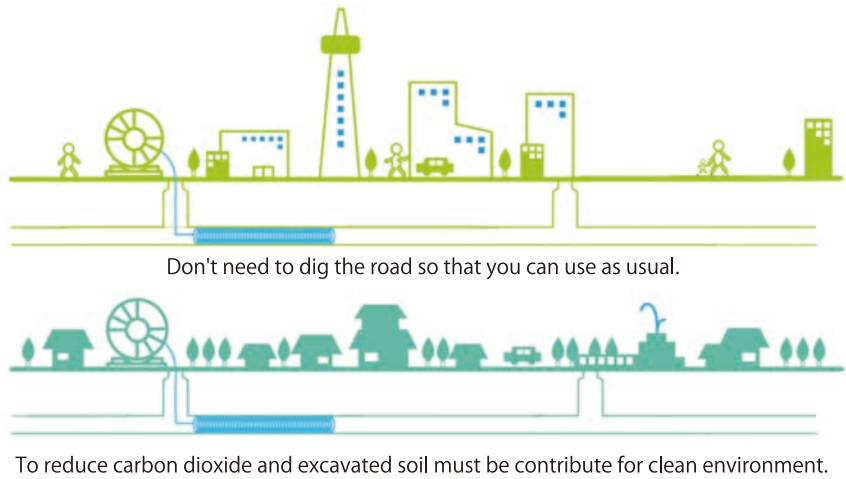


For Environment

【Basic Philosophy】

In order to leave the beautiful Earth for the children of the future and with the concept of Cherish Limited Resources, we recognize that business activities as construction industry are closely related to all countries and regions, and promote activities aimed at a sustainable recycling society in harmony with the environment.

Advantage of No-Dig construction



Product for Disaster Prevention & Disaster Measures

Disaster prevention storage typetemporary toilet system

Backfilled pavement

Installed when a disaster occurs

This is a temporary toilet system when a disaster occurs. By connecting it directly to the public sewerage, the toilet maintenance cost can be reduced.

Company Profile

Company name	Nippon No-Dig Technology LTD.	President	Naoki Yamada
Founded	April 8, 1994		
Capital	60 million yen		
Head office	East Square Omori 5th Floor 6-20-14 Minami-oi Shinagawa-ku Tokyo 140-0013 Japan TEL +81-3-5764-2300 FAX +81-3-5764-2301	Tokyo Branch	East Square Omori 5th Floor 6-20-14 Minamioi Shinagawa-ku Tokyo 140-0013 Japan TEL +81-3-5764-2300 FAX +81-3-5764-2301
Construction Business License	Ministry of Land, Infrastructure and Transport permission (Special-5), No. 17777	Tohoku Branch	Sumitomoseimei Sendaichuo Bldg. 10th Floor 4-6-1 Chuo Aoba-ku Sendai City Miyagi 980-6010 Japan Tel +81-22-722-3744 Fax +81-22-722-3745
Description of Business	■ Civil Engineering SPR method, Omega Liner method ■ Pipeline construction Communication pipeline reclamation method, electric power pipeline reclamation method Manhole Toilet for Disaster (Storage Type) Disaster Prevention Storage Toilet System	Business locations	Yokohama Branch
			Yokohama Businesspark WestTower 7th Floor 134 Godocho Hodogaya-ku Yokohama City Kanagawa 240-0005 Japan Tel +81-45-348-4811 Fax +81-45-348-4848
			Nishinohon Branch
			Hirose Hiranomachi Bldg. 1st Floor 2-6-6 Hiranomachi Chuo-ku Osaka City Osaka 541-0046 Japan Tel +81-6-4706-2007 Fax +81-6-4706-2008



IT for the Prosperous Future

Bring about **safety, security, and convenience** to society

Technical Brain Co., Ltd., established in May 1986, has been a software development company for more than 30 years in Japan. Our mission is to provide safety for people and play a part in developing systems that are useful for customer businesses by using our technological capabilities built up over many years.



Secure people's lives, bodies, and assets from disasters
Disaster prevention systems

We mainly build disaster prevention systems for local government agencies (ordinary local public bodies, including prefectural and municipal governments) and engage in developing systems every day that maintain the stability of citizens' lives, assets, and lifestyles.

Disaster prevention business



Support prompt and adequate relief efforts
Firefighting command system

We build firefighting command systems for local government agencies and develop systems that allow ambulances and fire engines to promptly assist people requiring emergency care, treat injured people, and respond to fires.

Firefighting business



Solve issues in a wide range of areas
Comprehensive IT solution systems

We make proposals and provide design, development, and maintenance services according to customer demand. Also, in order to provide consistently stable systems, we offer system enhancement and version upgrade services for existing systems and help facilitate customers' business activities and management.

IT strategy business



Improve productivity at construction sites
Business support system

Systemizing traditional administrative tasks of visual checks and inspections and paper-based recording and reporting to improve the productivity of site workers. We develop systems that best fit customer needs.

Construction DX business

We take care of everything from design and development to maintenance.
 Rest assured that we also offer maintenance services when requested by customers.

Introduce more IT technologies to the future

Continue playing a part in creating prosperous future with IT

Technical Brain has engaged in system development while interacting with industries that include local government agencies, hospitals, and the broadcast industry. We are devoted to development while continuing to challenge new approaches in order to further grow our business. We engage in not only contracted development but also in-house development and back up those who wish to enrich the future with their own ideas. Technical Brain will continue stepping up the efforts to bring about safety, security, and convenience to society, turn the individual creativity and development capability into a power, introduce more IT technologies to the future, and enrich the future with IT.

Development of a **skill-up** environment

We essentially do not accept SES (system engineering service) contracts because we think that no one would be happy to work in unfamiliar workplaces and would feel out of place. We try to assign employees tasks considering their individual career plans and aptitudes as much as possible so that they have opportunities to naturally develop their full potential.

We develop in-house systems besides undertaking contracted development externally. Our duties range from design, development, and requirement definitions of Web systems, which allow employees to improve their skills in a broad range of fields. You can become involved in greater depth in one area but not a broad range of activities in large companies. While in venture companies you must move to the next task before enjoying the depth of one work area. You can fulfil both in our company.

When you join the company, we ask you to take on-board training together. The training helps you to enhance and learn not only work-related skills but also people skills, which is important for business.

Our technological capabilities

We have a history of development that uses an array of development languages, frameworks, and software.

- System development with C#, PHP, JavaScript, C++, C, Java, and Python
- Web front-end development using HTML, CSS, JavaScript, and jQuery
- Frontend and back-end development with frameworks of Laravel, Vue.js, Django, and WordPress
- Database design and implementation using PostgreSQL and Oracle
- Creation of a 3D character world using Blender
- Cloud service development with AWS
- CG app development using both C# and Unreal Engine 4

Corporate Profile

Company Name	Technical Brain Co., Ltd	President	Tatsumi Kanatani
Founded	May 16, 1986		
Capital	10 million yen		
Number of Employees	33 people	Description of Business	<ul style="list-style-type: none"> ■ Contracted system development for local ■ System design, development, operation, and maintenance ■ Design and development of Web apps and sites
Head office	Level 4 Ueno TG Bldg., 6-16-22 Ueno, Taito-ku, Tokyo 110-0005 Telephone number: +81-3-3837-4551		



HIROSE ASIAN NETWORK

Specialized construction company contributing to infrastructure development and construction in Southeast Asia

As a trusted partner.

The Hirose Group serves as a specialized corporate group of heavy temporary construction businesses that support infrastructure development in Singapore, Thailand, Vietnam, in Southeast and Asia.



OUR REGIONAL NETWORK





Sheet Pile



Road Deck Panels



H-Beam



Earth-Retaining Material

Company Profile

HIROSE (SINGAPORE) PTE. LTD.

Company name	HIROSE(SINGAPORE)PTE. LTD.	Founded	April 1983
		Capital	10 million Singapore Dollars
Head office	200 Cantonment Road, #06-06/07, Southpoint, Singapore 089763	President	Hisataka Miura
Contact	TEL +65-6225-8655 Email inquiry@hirose.sg	Description of Business	Rental and sales of heavy temporary materials and contract of construction work
		home page	http://www.hirose-singapore.com/

HIROSE (THAILAND) LTD.

Company name	HIROSE(THAILAND)LTD
Head office	21st Floor, Wave Place Bldg., 55 Wireless Road, Lumpini, Pathumwan Bangkok 10330, Thailand
Contact	TEL +66-2-651-5505 Email sales@hirose.co.th
Founded	September 1988
Capital	10 million Bahts
President	Akihiro Katsumata
Description of Business	Rental and sales of heavy temporary materials and contract of construction work
home page	http://www.hirose.co.th/

HIROSE VIETNAM CO.,LTD. HIROSE (VIETNAM) HANOI CO.,LTD.

Company name	HIROSE VIETNAM CO., LTD. HIROSE (VIETNAM) HANOI CO., LTD.
Head office	7th Floor, Phuong Long 2 Building, 16 Nguyen Truong To Street, Ward 12, District 4, Ho Chi Minh City, Vietnam 9th Floor, Vinafor Building, 127 Lo Duc Street, Dong Mac Ward, Hai Ba Trung District, Hanoi, Vietnam
Contact	TEL +84-28-3824-7710 Email admin@hirose.vn (Ho Chi Minh) TEL +84-24-3220-2005 Email infor.hirose@hirose.vn (Hanoi)
Founded	January 2011
Capital	8.27 million US dollars
President	Masazumi Matsuura
Description of Business	Rental and sales of heavy temporary materials and contract of construction work
home page	http://www.hirose.vn/

